

TYPICAL LED DOWN-LIGHTER



TYPICAL DB



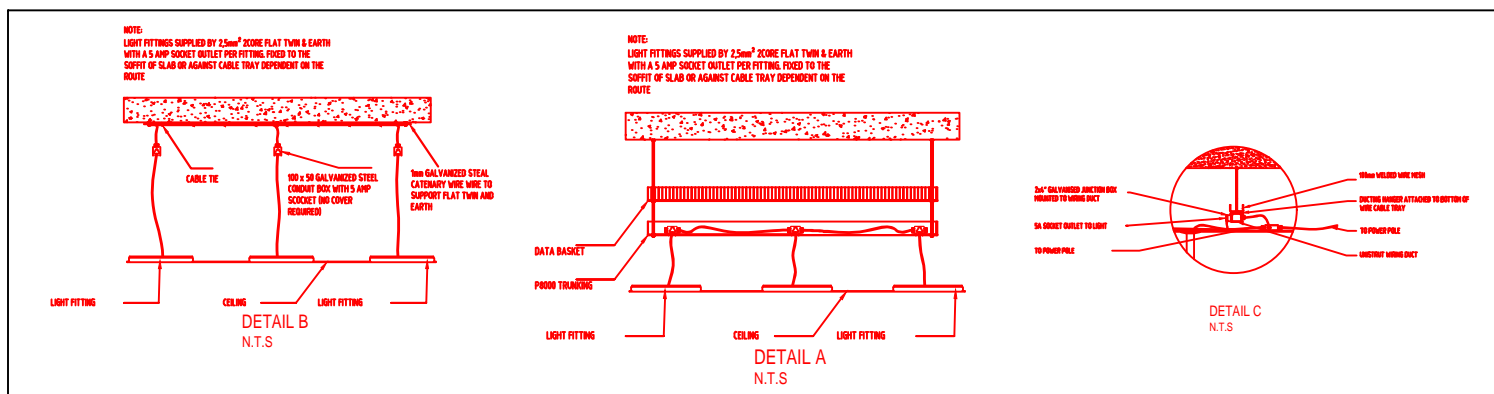
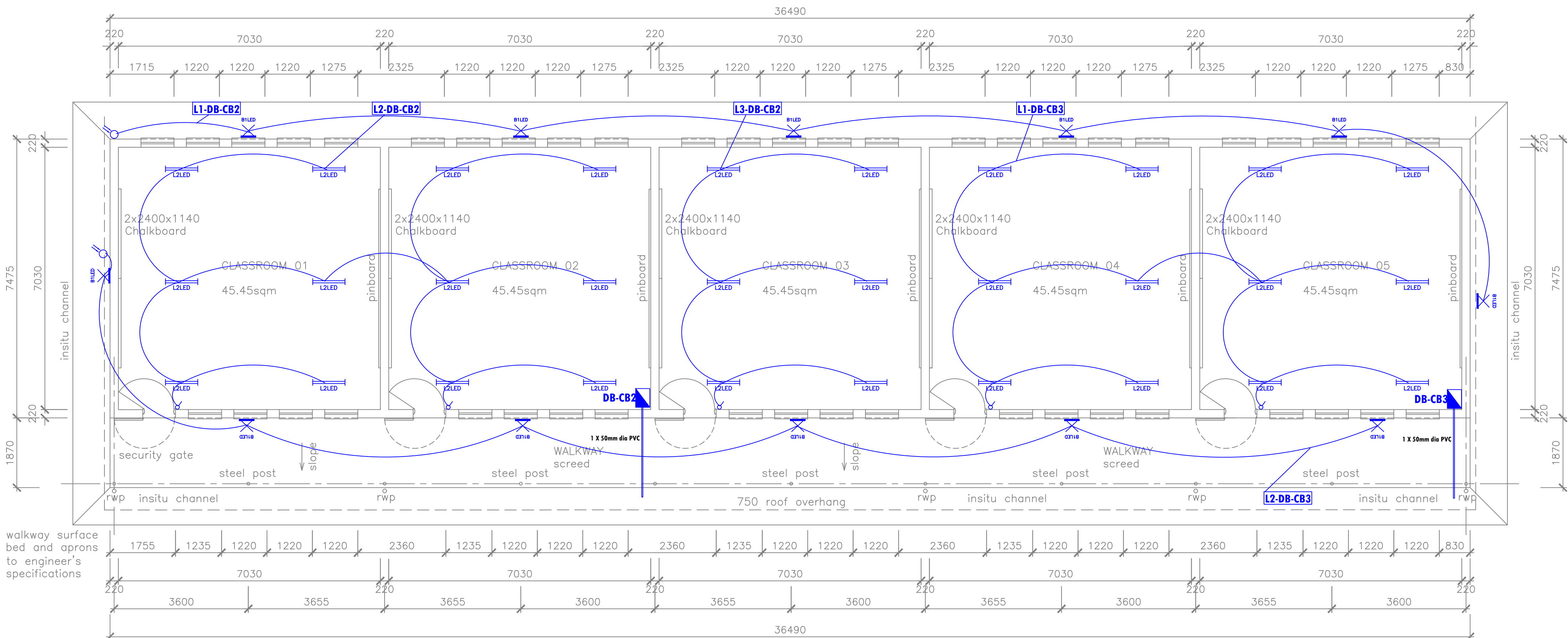
TYPICAL 18W LED TUBE



TYPICAL LED BULKHEAD

LIGHTS	=	10A	=	2,5mm ²	+	2,5mm ²	E
LIGHTS	=	15A	=	2,5mm ²	+	2,5mm ²	E
PLUGS	=	20A	=	2,5mm ²	+	2,5mm ²	E
PLUGS	=	25A	=	4,0mm ²	+	2,5mm ²	E
GEYSER	=	20A or 25A	=	4,0mm ²	+	2,5mm ²	E
GEYSER	=	30A or 40A	=	6,0mm ²	+	4,0mm ²	E
ISOLATOR	=	20A or 25A	=	4,0mm ²	+	2,5mm ²	E
ISOLATOR	=	30A or 40A	=	6,0mm ²	+	4,0mm ²	E
ISOLATOR	=	45A	=	10mm ²	+	6,0mm ²	E

MINIMUM CIRCUIT
WIRING SIZES - 2.5mm²



Electrical Notes			
1. ALL CONDUIT RECESSED SUBS APPROVED PVC WITH GALVANISED OUTLET BOXES (EXCEPT 50 DIA ROUND TO BE PVC).			
2. HEIGHTS ABOVE FINISHED FLOOR LEVEL SHOWN TO BOTTOM OF OUTLETS/EQUIPMENTS.			
3. ALL EQUIPMENT TO BE SUPPLIED AS SPECIFIED. NO ALTERNATIVES TO BE TENDERED.			
4. ALL LIGHT SWITCHES MOUNTED AT 1400mm AFPL UNLESS OTHERWISE SPECIFIED.			
5. ALL OUTLETS, WIRING AND CONDUITS TO BE INSTALLED BY ELECTRICAL CONTRACTOR.			
6. SOCKET OUTLETS MOUNTED AT 300mm AFPL UNLESS OTHERWISE SPECIFIED.			
7. THIS DRAWING IS TO BE READ IN CONJUNCTION WITH ALL OTHER RELATED DRAWINGS FOR CO-ORDINATION PURPOSES.			

Legend	
SYMBOL	DESCRIPTION
	Dedicated 16A Switched Socket Outlet (Single)
	16A Switched Socket Outlet (Double)
	16A Switched Socket Outlet (Single) With 2 pin plugs and USB Ports
	Electrical Distribution Board
	Data Distribution Board
	2 x 18W LED Light
	Emergency 2 x 18W LED with Battery Backup
	Wall mounted 12W LED Bulkhead Light
	Wall Mounted Self Contained Battery Exit Sign a) Main Exit Sign - One Sided.
	Photo-Electric Daylight Switch.
	16A One Way Single Pole Light Switch - Explosion Proof type.
	16A One Way Single Pole Light Switch - Explosion Proof type.
	Ceiling Fan Control
	3-Blade Ceiling Fan
	2-Compartment Power Skirting
	Indicates Circuit Number.
	Data Outlet Point
	Telephone Outlet Point
	Single Phase Isolator

Signature by the Client department

Development Bank of Southern Africa
Headway Hill 1258 Lever Road,
Midrand South Africa
P O Box 1234
Halfway House 1685
Tel: +27 11 313 3911
Email: webmaster@dbsa.org



Revisions			
Rev. No.	Date	Description	Rev. by

CHECKED BY CONSULTANT
NAME

SIGNATURE
CONSULTANT
Deedscon Consult (Pty) Ltd
52 Panorama Road
Rooihuskraal
Centurion
0157
Tel: +27 12 655 0994
Email: info@deedscon.co.za



PROVINCE OF KWAZULU NATAL
DEPARTMENT
OF
EDUCATION
HEAD: EDUCATION

PROJECT
DEPARTMENT OF EDUCATION:
KING CETSHWAYO DISTRICT MUNICIPALITY
PROPOSAL - UPGRADES & ADDITIONS
AT NKOSITHANDILE SECONDARY SCHOOL

DRAWING DESCRIPTION
FIVE CLASS ROOM BLOCK
LIGHTING LAYOUT

PROJECT No.		DRAWING No.		REVISION	
1905-04		EE-LL-02		0	
SCALE	DATE	DESIGNED/DRAWN	CHECKED		
N.T.S	Sep 2022	T.M	A.M		

NKOSITHANDILE SEC. SCHOOL